

# the GatePost

*"I am the gate; whoever enters through me will be saved" John 10:9*

Newsletter of the Central Illinois District of the Lutheran Church—Missouri Synod

2021: Issue 5



*In This  
Issue...*

Convention Information

Page 1-3

President's Letter

Page 4

Christian Citizenship

Page 5

Witnessing in Everyday Life

Page 7

Re:Vitality

Page 8

Official Notices

Page 9

Bring Giving Home

Page 11

Camp CILCA

Page 12

LWML CID Convention

Page 13

YouthLead Training

Page 14

MDFL Winter Conference

Page 15

**Making  
Disciples  
for Life** 

## The 60th Regular Convention

of the Central Illinois District Lutheran Church—Missouri Synod

July 17-19, 2022

Crowne Plaza Hotel, Springfield, IL



The 60th Convention of the Central Illinois District of the Lutheran Church – Missouri Synod and the 9th Convention of the CID Church Extension Fund, Inc. will be held at the Crowne Plaza Hotel in Springfield, Illinois, on July 17-19, 2022. **Registration** for the convention and business sessions will be held at the Crowne Plaza from **3:00pm to 6:00pm on Sunday, July 17th**, and beginning at **7:00am on Monday, July 18th**. **Room reservations** will be available after May 1, 2022, at the **Crowne Plaza** and the **Holiday Inn Express** (next door). The Holiday Inn provides a continental breakfast, but the Crowne Plaza does not.

The By-Laws of Synod (4.2.2) state that **"delegates of a voting congregation** to a district convention shall be accredited." This involves preconvention registration by both the pastoral delegate and lay delegate with properly signed documentation by 2 congregational officers. At the convention they are to identify themselves to the credentials committee at the registration desk, presenting a form with their name and

congregation. Bylaws have changed as to the process of the Synodical Presidential Election and a special document is not required for attendance at the District Convention.

All **nonvoting ordained and commissioned ministers** who are members of the Synod within the district shall serve as **advisory delegates**. They are entitled to voice and vote on a floor committee, if appointed, and to speaking privileges at the convention. All advisory members are expected to attend all sessions of the convention.

**Guests, exhibitors, and others** are welcome to attend, but are also to present themselves to the credentials committee at the registration desk for identification purposes.

Prior to the convention, Convention materials will be made available by email or on the CID website. Other advisory delegates desiring this information may request it from the District Office. **Each individual is responsible for printing their material they**

*continued on Page 2*

**All non-praesidium nominations must be in (postmarked) by December 31, 2021, to be considered for placement on the ballot at the convention.**

# The 60th Regular Convention of the CID

## "In Christ... Newness of Life"

Romans 6:3-4

2 Corinthians 5:17

continued from Page 1

**need for the convention.** There will be very limited printed copies of convention materials at the registration desk. There will be no electrical outlets available in the convention hall for computers.

We plan to again use **voting keypads**. This should hasten the election process and eliminate much paperwork. Each voting delegate will be assigned a wireless voting keypad. There is a charge of \$395 for any damaged or lost keypad.

### Registration Fees

Each voting delegate will be assessed a fee of \$135 to cover convention costs and 2 meals on Monday. **Voting delegate registration not received by June 1, 2022, will be subject to an additional \$50 fee.** *Nonvoting ordained and commissioned ministers* who are actively serving and attending the convention will be assessed a fee of \$40 which does not include meals. If meals are desired add \$80 (\$35 for lunch and \$45 for dinner). For *emeritus ordained and commissioned ministers, guests, and exhibitors* there is no charge for registration, but the \$80 meal charge applies if meals are desired and at least one week notice of your attendance must be given before the convention convenes. Exhibitor space is available for \$50 per table desired. If an electrical connection is desired, an additional \$40 is required. Exhibitors will be assigned tables and a layout will be available so conventioners will know where each exhibitor is located.

### Hotel Information

Everyone is to make their own reservation with the hotels after May 1st. Room rates which include 1 or 2 persons at the Crowne Plaza is \$119 (does not include breakfast) and at the Holiday Inn Express \$119 (which includes a continental breakfast). When you contact the hotels for reservation, tell them you are with the **Central Illinois District Convention/CID** to receive our special rates. If you have any difficulties, contact the District Office.

**Crowne Plaza**  
3000 S. Dirksen Parkway  
Springfield, IL 62703  
(217) 585-2830

**Holiday Inn Express**  
3050 S. Dirksen Parkway  
Springfield, IL 62703  
(217) 585-2830

### Directions

From Interstate 55 take Exit #94 (Stevenson Drive) and travel west to Dirksen Parkway. Turn right (north) and travel a short distance to the hotels located on your right (East).

### Electing Circuit Visitors (By-law 5.2.2)

1. It shall be done at a Circuit Forum attended by one lay person and one pastor from each congregation (Forums should be held before March 10, 2022).
2. Election shall be by written ballot.
3. Eligible – All pastors serving congregations in the circuit and any emeriti pastors in the circuit.
4. Process to follow:
  - A. Information provided on each pastor who is nominated,
  - B. Each voter shall vote for two pastors on the initial ballot,
  - C. The three Pastors with highest votes are placed on next ballot,
  - D. Each voter shall now vote for one pastor,
  - E. Voting continues until one has majority of votes cast,
5. Immediately after election, the current Circuit Visitor reports the election in writing to the District Secretary, Rev. James Stuenkel, 2659 Windfall Dr., Sherman, IL, 62684-9548, or email [revstuenkel@gmail.com](mailto:revstuenkel@gmail.com)
6. The July CID Convention will ratify the election.

### Schedule

The convention will start with an opening communion service on Sunday, July 17th, at 7:00pm. Monday morning, July 18th, the sessions begin at 8:00am and will continue until 9:30pm. The only scheduled breaks are for lunch and dinner. **Bathroom and coffee breaks are on your own.** It is not good stewardship to have everyone heading to those areas at the same time. Our meals will be next door to our convention meeting area. Tuesday, July 19th, the sessions again begin at 8:00am and continue until 12 noon, if necessary. You will be on your own for Tuesday lunch.

### Seating

There will be sufficient seating for all delegates in the delegate section. All voting delegates are asked to sit in the designated area. Advisory members and guests will sit in the areas to either side of the Voting Delegates.

# The 60th Regular Convention of the CID

## Call for Nominations

The call is out for names to be submitted for various elected positions that will be considered at the upcoming CID Convention. Included in this communique are Exhibits A-C which describe the positions for which we are seeking nominees, the numbers of nominees sought in each category, information/qualifications based on the CID Handbook that are relevant to such positions, and a form for name submissions.

*It is especially important that the lay positions are considered since, in times past, there have been few qualified lay people who have been nominated. Please suggest a name or two of the lay leadership in your congregation for the Nominations Committee to consider for appropriate positions on the ballot. Most certainly, also submit qualified pastors' names as part of this process.*

This nominations process is open for all who wish to participate: Pastors, members of our congregations, congregational leaders, church councils, and voters assembly. It is recommended that several copies of Exhibits A-C be made generally available where church literature is usually displayed. Also a notice in your bulletin could also extend this invitation for all to participate.

*"Nominations forms for elected positions of leadership in the Central Illinois District are available \_\_\_\_\_ [on the literature table/ in the narthex/entryway/at the welcome center]. All are asked to help with this process. If you are aware of someone who could serve at the District level in one of the positions where nominations are being sought you are encouraged to fill out the form and return it to the church office to forward to the District Nominations Committee. Please get the consent of the person you are nominating. All nominations forms are due at the District Office, 1850 N. Grand Ave. W., Springfield, IL 62702-1626, by December 31, 2021."*

**Exhibits A-C are available at the end of this GatePost.** These same items are also available on the CID website: [www.cidlcms.org](http://www.cidlcms.org)

### REMINDER:

The Convention Workbook will be made available online at [www.cidlcms.org](http://www.cidlcms.org) and each delegate will be responsible for printing off their copy and bringing it to the Convention.

## Important Dates

- ▶ **December 31, 2021** – all non-praesidium nominations must be in (postmarked) by this deadline to be considered for placement on the ballot at the convention.
- ▶ **January 1, 2022** – anytime after the New Year and before March 10th, once you have chosen your lay delegate, please send that name into the District Office, [cid@cidlcms.org](mailto:cid@cidlcms.org), so that we will have a pool from which to select floor committee members.
- ▶ **March 8, 2022** – **Registration and payment** of lay and pastoral delegates from each congregation are due. After June 1st late registration will be \$185 per delegate.
- ▶ **March 10, 2022** – **Circuit Forums** should have met by this time to elect Circuit Visitors for the next Triennium. Circuit Forums (other appropriate and official venues for overtures include Voters Assemblies, the District Board of Directors, a District Board or Commission, and official Pastors Conferences), may also consider overtures to be submitted for the Convention Workbook.
- ▶ **March 15, 2022**  
**Overtures** are to be submitted to the District Office for floor committee consideration.  
**Reports for the Convention Workbook** from Officers and Commissions are to be received at the District Office:  
 Central Illinois District LC-MS  
 1850 N. Grand Ave. W.  
 Springfield, IL 62702-1626  
*Overtures and Reports may be submitted electronically - [cid@cidlcms.org](mailto:cid@cidlcms.org)*
- ▶ **March 17, 2022** – **Congregational Nominations for District President** [Official Nomination Ballots will be sent to the congregations by the District Secretary] **are due at the District Office** (must be postmarked by this date).
- ▶ **May 21, 2022** – **Convention Floor Committee[s]** meet at the CID Office in Springfield, beginning at 9:30am.
- ▶ **June 1, 2022** – **Convention materials** shall be made available to lay and pastoral delegates by email. Also, to be made available on the District Website – [www.cidlcms.org](http://www.cidlcms.org)



# From the President's Desk

## "The Season of Light"

In the beginning... From the start the Bible's focus on light is stark and repetitive. The very first day of Creation is one in which the overall primordial darkness is parted by light giving way to day and night, "evening and morning." Light is set especially in the presence of God in whom there is no darkness. The theme runs throughout the Scriptures culminating in the existence of the eternal New Jerusalem. There is no darkness there either, but its light is not coming from heavenly bodies like the sun and the moon. God Himself in His majesty is the light that enlightens the saints in paradise.

Without the light that comes to us from the sun, neither we nor most of life on earth could exist. We are aware that plant life is especially dependent on light for the process of photosynthesis where carbon dioxide and water produce the plants

**With God there is only light and not darkness! Live in His light that you will always know the light that is Christ our Savior!**

own food and oxygen for us. Vitamin D is a hormone produced when the skin is exposed to UVB rays from the sun. It helps us absorb calcium, strengthens our immune system, and improves cell growth which helps reduce inflammation. The fun part of a cavern tour is when the tour guide

pauses a moment in vast rocky hall and asks for the lights to be turned off. You can't see your fingers an inch from your face. It's exhilarating for a moment but there is no moving from that spot and getting out of that cave until the lights are turned back on. Without light, we would not know where we are and where we are to go. Without light you can end up really lost, both physically and spiritually.

Soon comes the winter solstice when daylight is at its scarcest on the calendar. There will be a mere 9 hours and 22 minutes of daylight on December 21st here in Springfield. When I lived in northern Minnesota the day was close to an hour shorter. The folks that live up in Alaska are deep in winter darkness who don't even get to see a sunrise. There a person can succumb to light deprivation which can lead to both physical and mental health complications and is treated with light therapy requiring that they sit in front of a bank of artificial light for a prescribed time. So important is light to our existence and good health.

Apart from the light of God's commandments true standards of right and wrong would be impossible to disseminate and enforce. Our consciences would run amok, and no peace would ever be found individually and collectively, spiritually and politically, as man's fallen inhumanity would rule the day. The light of God's Law shines its brightness on the tapestry of our life and reveals the horrible mistakes and grievous sin that pervade so deeply into our lives and condemns us to God's judgment and consigns us to eternal death. Now that's darkness of the worst sort! With that knowledge there is the need to have the light of the Gospel to shine on us for a different result. Jesus declared, "I AM the light of the World!" Through the birth, life,



*Rev. Mark A. Miller, CID President*

suffering, death, and resurrection of Israel's Messiah and our Redeemer, light brings life in the deepest and surest sense. This is divine light connected to the One in whom it cannot die. His light brings life to us that will never end.

With the crimson thread of salvation's history worked out by Jesus running through it from start to finish, the Scriptures become a light that reveals God's true feelings for His fallen creation. "Thy Word is a lamp unto my feet and a light unto my path." It directs us in a way that is paved with eternal results meant for our good and for the reconciling of God and man. It directs us back to our heavenly Father by way of His Son from whom we have wandered long enough. Here is where true and beneficial education is found. By the light of His holy Word and through the work of His Spirit we are redirected away from self and the path of disaster that can only lead to and we are set on the way that leads to everlasting life and to worship at the throne of the Lamb who was slain for us. By His Word Christ has preeminence in everything and He becomes and remains our hope for the day and our comfort in the night.

*continued on Page 12*



## Christian Citizenship in Difficult Days: *How Can You Help?*

God our Creator instituted government to be a means by which He preserves and orders life among fallen human beings. Government belongs to His kingdom of power. The governmental realm is to be distinguished from that of the church. Governments are instituted not to save souls, but to uphold order and provide justice. Scripture teaches that government is to reward the one who does good and to punish the evildoer (Romans 13:1-7; 1 Peter 2:13-17).

In our country, Christians as citizens have many opportunities to do good in the governmental realm. Not only do individual Christian citizens pay taxes; we can also seek elected office and vote. We are able to participate in voluntary associations such as service clubs, civic improvement organizations, and political parties. We can let our views be known to our neighbors, not only government officials but others as well. By applying moral principle to public and political issues, we make a crucial contribution to maintaining justice and freedom in our communities and in our country.

An alarming number of morally decadent proposals have recently been introduced for consideration in the Illinois legislature. During its last session, for example, the legislature approved removing the state's requirement of parental notification before an abortion is performed on an underaged girl. The legislature also adopted a measure that requires the observance of new and shocking sex education standards in every Illinois public school district that offers this kind of instruction. Please note that these two examples are of legislation that actually passed, to say nothing of bills that were introduced on other subjects and may have come close to being adopted.

To assist members of Central Illinois District congregations in exercising our obligations as citizens, the District office will compile a list of ethically charged issues that are likely to arise in the 2022 legislative session. Watch for this summary, which will be available early in January on the Human Care page of the CID website, <http://www.cidlcms.org/ministry-human-care-christian-citizenship.html>

Portions of the above were adapted from "Guidelines for Crucial Issues in Christian Citizenship," Report of the Commission on Theology and Church Relations, The Lutheran Church—Missouri Synod

## CID Endowment Fund

The CID Endowment Fund was founded to assist the CID with scholarships for the education of full time church worker students attending the Concordia University System, Concordia Theological Seminary in Fort Wayne, Indiana, or Concordia Seminary in St. Louis, Missouri, pursuing careers as ordained pastors or other full time church work professions. The Fund annually distributes to the CID for scholarships. The Fund determines in February each year the amount to be distributed so that the CID Scholarship Committee knows the total amount of funds available for the next academic year.

The CID Endowment Fund, since 2018, has authorized \$154,115 to be transferred to the CID. In 2019 the CID Scholarship Committee did not need the full amount authorized and recommended to the fund that \$26,000 remain with the Fund.

The Board of Trustees of the CID Endowment Fund will determine the amount to be authorized for 2022 scholarships at the February 12, 2022 board meeting.



## 2022 CID Youth Bible Bowl

Announcing the 2022 Central Illinois District LC-MS Youth Bible Bowl topic: Romans and 1 Corinthians. We heard requests for the Bible Bowl to cover Luther's Small Catechism. This year's topic is as close to that as it comes. St. Paul discusses the Ten Commandments, the doctrine of God, Christ's atonement, and the work of the Holy Spirit. Paul deals with the church and proclaims the forgiveness of sins (justification by faith), the resurrection of the body, and the life everlasting. Baptism, the Lord's Supper, and the Office of the Keys are explained. And prayer is interspersed with these basic Christian doctrines.

Date (Spring 2022) and location for the District Bible Bowl will be announced later. But now is the time to study these important epistles of the Bible with your youth and to talk within your circuit about holding a circuit Bible Bowl in preparation for the District Bible Bowl. Each circuit may send two teams to Springfield. For more information on how you can hold a Bible Bowl in your circuit, contact Pastor Mark Eddy at Zion Lutheran Church, Taylor Ridge, Ill. (zionlcms@juno.com).



*The "unofficial" picture of participants in the 2021 All-CID Campus Ministry Retreat.*

Also present were Pastor Kenneth Hoover from Immanuel, Charleston (serving Eastern Illinois University), William Jensen from Wittenberg Lutheran Chapel at Illinois State, and Pastor Michael Schuermann from University Lutheran Church, Champaign (serving the University of Illinois Urbana-Champaign). Lana Schurb prepared meals and snacks for the retreat group.

Camp CILCA provided an unexpected discount on rooms at its Christian Growth Center. This enabled the group to contribute \$110 from participant registration monies to the campus ministry endowments, split equally four ways. These dollars will be matched by Lutheran Legacy Fund, as will other contributions to the endowments for any of CID's four campus ministries between now and July 1, 2022. If you would like to donate, see <http://www.cidlcms.org/outreach-missions-campus.html>

*Another all-CID campus ministry retreat is scheduled for the 2022-23 academic year.*

## Simple Gifts

A SERIES OF DEVOTIONS ON STEWARDSHIP



## Stewardship Devotions for Epiphany

"Simple Gifts" is a 22-part series of devotions on stewardship. It is produced by the Synod's Office of National Mission.

Each devotion is one page in length, including a Bible passage, meditation, and prayer. Among the daily topics are "Stewards of the gift of peace" and "Gifts for the generations to come."

"Simple Gifts" is available on the Synod's website. Go to [lcms.org/stewardship](https://lcms.org/stewardship) and scroll down to the "Digging Deeper" section.

## Campus Ministry Retreat

On September 24-25, 2021, an all-CID campus ministry retreat took place at Camp CILCA. District Mission Executive Ken Schurb presented on "The Christian's Mission," based on the *Lifelight* course with the same name that he wrote for Concordia Publishing House.

Fifteen students were present. This number was not so high as the attendance figure from the last such retreat in 2019, but everyone is still dealing with COVID in one way or another.

## Witnessing in Everyday Life

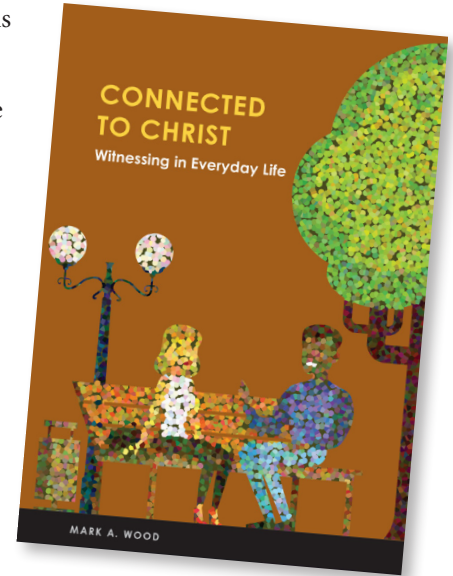
Witnessing starts simply. One person, broken by sin, speaks to another broken person. Through His Word, the Holy Spirit guides a sinner to Christ. And Christ is the ultimate Healer.

Witnessing to Christ does not require your life to be perfect. Nor does it require an extensive knowledge of Christianity. The Holy Spirit is at work when you tell the Good News about Jesus. He works through you to plant the seeds of Christ's love in the heart of another.

In the recent book *Connected to Christ: Witnessing in Everyday Life*, Rev. Dr. Mark A. Wood uses terms from the garden – plowing, planting, watering, waiting, and harvesting. Through these, he aims to help you see how the seeds your congregation plants now can, with the help of the Holy Spirit, be harvested by future generations of Christians to bring people broken by sin to the Savior.

Mark Wood is director of LCMS Witness & Outreach Ministry and of the Synod's revitalization initiative. He is the author of *Every One His Witness* and the *re:Vitality* program.

*Connected to Christ: Witnessing in Everyday Life* can be purchased for \$8.99 from Concordia Publishing House. Telephone (800) 325-3040. Bulk discounts are available.



## Church Planting

Church planting stands out as a priority for our Synod. The first word in the first of our Synod's seven mission priorities is "PLANT, sustain, and revitalize Lutheran churches."

Church planting does not happen by accident. It comes after study of God's Word and a prayerful examination of one's opportunities. A little brotherly support doesn't hurt, either. At its last convention the Synod resolved that "congregations and circuits be encouraged and supported by their respective districts to investigate and identify new church plants" (2019 Res. 1-02).

One of the ways CID is trying to encourage church planting is to offer tools to get conversation about church planting started in our congregations. We are working on a series of short videos and a brochure to introduce church planting. Watch for these in the early spring.

*And circle the month of May, 2022. This promises to be a great time for us in CID congregations to begin talking about church planting!*







# RE:VITALITY

## BECAUSE WE'RE THE CHURCH

### Members of One Body

The newest module among the Synod's *re:Vitality* tools for congregational revitalization is "Members of One Body." Its subject is assimilation.

Perhaps you have heard the word "assimilation" in connection with the human digestive system. In the present case, however, this word refers to helping new church members to be who they are: members of the body of Christ. It really is about life together as *Members of One Body*. Maybe a better word is "incorporation." The "Members of One Body" module uses both.

This module will be ready for beta testing in the spring or summer of 2022. Please contact CID Evangelism Executive Ken Schurb if your congregation might be interested in participating in the beta test.

**Also:** keep your eyes peeled for a series of Assimilation-oriented sermon helps to support preaching on 1 Corinthians 12 and 13. These biblical chapters will be read as the Series C epistle lessons for January 16, 23, and 30. The sermon helps are available on the District website, <http://www.cidlcms.org/resources-studies.html>

# RE:VITALITY

Revitalization is doing what we do because we are the Church. *re:Vitality* helps us do it better.



## CID is on Facebook AND Instagram

Come find us @cidlcms in both locations! Our page is filled with prayer and encouragement for you to share with those around you. Join us to keep up to date on District happenings and learn about new and exciting things coming soon!



# Lutherans For Life 2022 Illinois Essay Contest

*Sponsored by the Council of Federation Presidents*

## For Students in Grades 6 through 12

*Any student in a Lutheran school or church is eligible. Lutheran students may also enter through a home school or congregation, e.g. confirmation class or youth group, when validated by the pastor or teacher.*

### Contest Guidelines

Students will write a life-affirming essay based on the theme: **Blessed For Life** with the Bible verse: **"... the Lord protects him and keeps him alive; he is called blessed in the land; you do not give him up to the will of his enemies."** Psalm 41:2. (Consider being blessed with the gift of life, blessed by God for one's entire life or blessed to be a blessing to others.)



**Blessed For Life**

1. Not incorporating the theme and verse in the essay will disqualify the entry.
2. Examples of topics the essay could deal with are, but are not limited to abortion, the handicapped, adoption or foster care, infanticide, cloning, stem cell research, physician assisted suicide or euthanasia etc.
3. Essays should include student's name, grade (school or church), and email address. All entries submitted by the teacher or pastor, should include their name and email address. This information should be submitted on the rubric page used in grading the essay. Teachers and pastors are encouraged to consult the rubric and submit qualified entries.
4. All sources for references, statistics and quotes should be incorporated within the essay and then included in a bibliography at the end.
  - Grades 6 - 8 should submit essays up to 400 words
  - Grades 9 - 12 should submit essays up to 750 words

Entries should be submitted digitally using Microsoft Word or Google Docs to [cathy.benning.os@gmail.com](mailto:cathy.benning.os@gmail.com) by April 1, 2022.
5. There will be a \$100 first place award and \$50 second place award for each of the two categories. The two first place category winners will advance to the national contest. Email [cathy.benning.os@gmail.com](mailto:cathy.benning.os@gmail.com) with any questions.
6. Grand prize for the national winning entry at each level: \$250 plus free conference registration to the 2022 Lutherans For Life National conference and one night stay at the conference hotel.
7. All entries become the property of Lutherans For Life.
8. For questions or resources on the sanctity of life, see [lutheransforlife.org](http://lutheransforlife.org)

*Official  
Notices*

9/25/2021 – 12/31/2021

## Ordained

### Transferred Out

- **Rev. Willie Grills**, St. Paul, Mattoon (Dorans), to MSD

### Installation

- **Rev. Michael Feldmann**, Associate to Senior, Salem, Salem, October 17, 2021
- **Rev. Clarence Rogers**, Pastor, Faith, Lincoln (Miller), November 11, 2021

### Called to Glory

- **Rev. Brian Homann**, St. John Beardstown, October 14, 2021
- **Rev. Edwin Blumenkamp**, EM, November 15, 2021
- **Rev. Darwood Kesselmayr**, EM, November 30, 2021
- **Rev. Gerry Weaver**, EM, December 1, 2021

**Making  
Disciples  
for Life**



# in all things

JULY 9-13, 2022 LCMS YOUTH GATHERING

Take the next step in your Gathering planning process as you prepare your group's registration for **In All Things!** Here you will find registration materials, including the necessary forms, to register your group for the Gathering. Primary Adult Leaders are encouraged to read through the provided materials thoroughly before beginning the registration process. All LCMS congregations are invited to register for the 2022 LCMS Youth Gathering!

*Group registration has begun!*

## Registration Specifics

### Online Registration Data Entry Closes

May 31, 2022

### Registration Opens (Postmark Date)

November 1, 2021

### Registration Rate Increase Date

March 1, 2022

### Final Day to Qualify for Express Registration

May 4, 2022

### Last Day for Cancellations or Substitutions

May 31, 2022

## Ways to Connect

### CID Lutheran Youth Facebook Group

Find the latest district updates and information

### LCMS Youth Ministry Facebook Group

Lots of Gathering related content and collaboration, but all thing youth ministry too!

### End Goals: LCMS Youth Ministry Podcast

All things youth ministry and some great episodes on the Gathering!

### LCMS Youth Gathering Social Media Links

- <https://www.facebook.com/lcmsgathering>
- <https://www.instagram.com/lcmsgathering>
- <https://twitter.com/lcmsgathering>

This event is organized by LCMS Youth Ministry in Saint Louis, MO. For additional ways to connect to LCMS Youth Ministry, please visit [www.lcms.org/youth](http://www.lcms.org/youth)

Central Illinois District Coordinator is **Jonathan Guse** (DCE at Bethel Lutheran Church, Morton, IL) can be reached at [jonathan@bethelmorton.org](mailto:jonathan@bethelmorton.org)



# CID-CEF Growth Bond Savings Stamp Redemption

While the Growth Bond Program administered by the Central Illinois District Church Extension Fund (CID-CEF) is now officially terminated, you still have time to request redemption of any unused stamps, partially completed growth bond books, and unsubmitted growth bond books! They will be redeemed at stamp face value upon presentation but must be received by **December 31, 2021**, for redemption.

Please submit for redemption all unused stamps and stamps in booklets by December 31, 2021, to the CID-CEF (1850 N. Grand Ave. W., Springfield, IL 62702). We ask churches and schools to please communicate this request as necessary to members of their congregations and schools.

*We thank you for participating in the Growth Bond program and pray that your youth have likewise grown spiritually from the knowledge that they have assisted with reaching souls by providing the use of their treasures to build and grow our churches and schools in the Central Illinois District.*



## Bring Giving Home

CID's stewardship and mission education initiative, *Bring Giving Home*, officially started at the District Pastors' Conference in Spring, 2019. Since then, a number of pastors have entered the Central Illinois District. These pastors have not had the benefit of that conference.

It is possible to play a little "catch-up," though. This February Pastor Heath Curtis, Coordinator for LCMS Stewardship, will be in Central Illinois to duplicate part of the presentation he made at our Spring, 2019 pastors' conference. This is the "pastor" portion of what LCMS Stewardship calls its "Philippians" workshop. In it, Pastor Curtis outlines the basic approach that marks all the Synod's Stewardship materials, including CID's *Bring Giving Home* initiative.

Pastors new to CID since spring, 2019 are invited to his presentation in February. Also invited are pastors who were in the District in spring, 2019 but somehow or other missed his talk at the conference then. And invited, too, are pastors who heard his talk but would like a "refresher." Because of a generous grant from Church Extension Fund, the District will reimburse all of them for their mileage to travel to and from Pastor Curtis's repeat presentation in February.

That's right — *all* CID pastors are invited to this presentation, and all can have a mileage reimbursement. The presentation will be at Good Shepherd Lutheran Church in Sherman, from 12:30 to 3:00 p.m. It will take place on Monday, Feb. 7, 2022. If the weather is bad on that day, the alternative date (same time) is Monday, Feb. 21, 2022.

Please register for this presentation by sending a message to Stewardship Executive Ken Schurb before Feb. 1. His e-mail address is [kschurb@cidlcms.org](mailto:kschurb@cidlcms.org)

### Philippians Workshop

(duplicate presentation for pastors)

**February 7, 2022**

**12:30-3:00pm**

**Good Shepherd Lutheran Church,  
Sherman, IL**





## CAMP CILCA

Camp CILCA gives thanks to God for a successful summer program in 2021, with over 500 campers attending. That is the largest turnout the camp has seen in over a decade. The completion of the Dining Hall project is another reason to rejoice. Nearly \$500,000 was raised to add on to the original space, insulate, and air condition it. Except for a few small touches, that work is complete. The Retreat Center and Christian Growth Center remain open for reunions and get-togethers of all kinds.

*Thank you to all in the Central Illinois District and  
God's blessings to you in these Advent and Christmas seasons.*

## From the President's Desk

*continued from Page 4*

Candles serve as a recognition of God's gracious presence and so are found in our churches around our altars. On Easter, in the Eastern Church especially, candles are lit to acknowledge that light that shined forth from the empty tomb and a new dawn for mankind that had risen with Jesus. During this Christmas time our neighborhoods are

shining brightly through the night and our trees twinkle with lights with lighted angels on the top and in a religious sense all those lights to remind us of the Light that Jesus is and always will be.

To be enlightened, and remain so, we must focus on the Light of the World who for us is Resurrection and Life, and to that end it is necessary that the Word that would light our path ought to be studied, mediated upon alone, and discussed among us in conversation and classes. As it is expounded from our pulpits for our deliverance, we must not desert the light lest, soon enough, we find ourselves in darkness and lost. Let nothing in this world part us from His Word!

When an unconscious person on the threshold of death is revived, they relate their experience and speak of a bright light toward which they were being drawn. We pray that none were being drawn in that moment to hellfire, so instead we are to make use of the light that shines from Jesus while His Word has free course and through it so be drawn to the New Jerusalem where God is its Light and all the saints will live in light and where darkness will have no part. With God there is only light and not darkness! Live in His light that you will always know the light that is Christ our Savior!

— Rev. Mark A. Miller, CID President  
1 Corinthians 2:2

**Light is set  
especially in the  
presence of God  
in whom there is  
no darkness.**



APRIL 29 & 30,  
2022

APRIL 29 & 30,  
2022

LWML Central Illinois District • 77th Annual Convention • April 29 & 30, 2022 • Springfield

# 77<sup>th</sup> LWML CID CONVENTION

## Springfield, IL

# JAN STRUCK

LWML'S FAVORITE  
HUMOROUS  
INTERRUPTER!



## Friday, April 29

St. John's Lutheran Church, Chatham  
Servant activities  
Jan Struck, evening activities

## Saturday, April 30

Our Savior's Lutheran Church, Springfield  
77th LWML CID Convention  
Jan Struck, keynote speaker & breakout session

CAN'T WAIT TO SEE EVERYONE!

# YouthLead<sup>®</sup> Training

**March 17-20, 2022**  
**St. Louis, MO**

For 40 years, YouthLead (formerly Lutheran Youth Fellowship) has equipped teens to develop and use their leadership skills as they serve Christ within their congregations and communities. Our annual leadership training event in St. Louis is lead by our teen Executive Team and gives teens the tools they need to mature in their faith, become leaders in their congregations, and reach out to their peers with the love of Christ.

**REGISTRATION IS OPEN NOW.**  
**GO TO [LCMS.ORG/YOUTHLEAD](https://lcms.org/youthlead) FOR MORE INFORMATION.**

**The CID has scholarship money available to assist with the cost of this event.**

## WHO IS INVITED?

Any high school youth who is an active member of an LCMS congregation can join us. We encourage you to contact your district before you register as some districts have supports for those attending this training.

We prefer teens attend with an adult leader from their congregation. Arrangements can be made for them to come unaccompanied.

## WHAT HAPPENS AT A YOUTHLEAD TRAINING?

Youth are equipped for leadership in two key ways. First, we engage them in studying God's Word through a Bible study they experience and are trained to lead back home.

Second, we focus on their unique identity and vocations so they can lead from their strengths in their home congregation.

## HOW MUCH DOES IT COST?

Registration for youth and adults is \$375. This covers your food, housing, supplies and a shirt during the whole training.

You will need to also cover your transportation to and from St. Louis.

## WHAT IF I CAN'T MAKE IT THIS YEAR?

If you can't make this training, don't worry! We hold training every year in St. Louis. We also work with LCMS Districts and groups of congregations in a region to bring smaller version of this conference to your area. Contact us for more information on this option.

**QUESTIONS? EMAIL US AT [YOUTH.MINISTRY@LCMS.ORG](mailto:youth.ministry@lcms.org)!**



**Making  
Disciples  
for Life**



# The Rock in Shifting Sands

Join us in-person or online for the  
'Making Disciples for Life' (MDFL) Winter 2022 Conference

**January 10 – 12, 2022**  
**LCMS International Center**

1333 S. Kirkwood Rd  
National Mission  
St. Louis, MO 63122-7226

*What does it take to be a faithful church amid a turbulent culture?*

#### **In-person registration**

The in-person portion of the conference, which will be held at the LCMS International Center in St. Louis, is limited to 150 participants. Registration, which is \$69 per individual, includes meals and snacks. Attendees will also have access to view recorded sessions for 60 days after the conference ends.

#### **Online registration**

Online participation is unlimited. An online registration, which is \$29, can be used by an individual, couple, family, or group. The conference sessions will be presented live, and registration provides access to view recorded sessions for 60 days after the conference ends.

The conference, which has the theme of *"The Rock in Shifting Sands,"* will feature three tracks focusing on:

- Church and state, Christian citizenship, religious liberty
- Critical theory, its manifestations and how the church should respond
- Discipleship, Christian education, lifelong catechesis

The conference's plenary sessions, break-out sessions, roundtable discussions, focus groups and LCMS Office of National Mission exhibits will be offered in a mix of virtual and in-person formats to accommodate as many attendees as possible. Those who participate in the focus groups will help identify needs and set the agenda for the next MDFL conference.

**For more information and registration**

<https://calendar.lcms.org/event/making-disciples-for-life-conference/>

Sign-up now at  
[www.cidlcms.org](http://www.cidlcms.org)  
to get  
*The GatePost* and  
*News You Can Use*  
emailed to you.



1850 North Grand Avenue West  
Springfield, IL 62702-1626

*The GatePost* for The Central Illinois District of the Lutheran Church—Missouri Synod is a supplement to congregational newsletters.

#### **Submit all articles to the Editor:**

Lewis "Trip" Rodgers  
1850 North Grand Avenue West  
Springfield, IL 62702-1626  
Email: [trodgers@cidlcms.org](mailto:trodgers@cidlcms.org)

#### **Layout and Design by:**

Deverman Advertising  
Pekin, Illinois

#### **Communications Committee:**

Rev. Mark Miller, Advisor  
Lewis "Trip" Rodgers, Editor  
Rev. Bob Bruer  
Jim Deverman  
Shawn Hoffmann  
Tim Mathis

# Seizures are Common

Have you ever seen a seizure? Seizures are more common than you might think. They do not strike only the very youngest or oldest people. Anyone with a brain can have a seizure.

A seizure is a brief disruption of electrical activity in the brain resulting in movement, sensation, behavior, awareness and speech. According to the Center for Disease Control, one person in 26 will be diagnosed with epilepsy in their lifetime. Epilepsy is a medical condition characterized by 2 or more recurrent seizures.

Do you know someone who is perhaps not coming to church because they might have a seizure there?

Would you like to learn more about seizures, and what you can do with respect to them? CID's Human Care Committee is interested in increasing the level of seizure awareness in our churches and schools. Contact Human Care executive Ken Schurb at (217) 793-1802 or e-mail [kschurb@cidlcms.org](mailto:kschurb@cidlcms.org)

Christ laid down  
**His life**  
for us.

1 JOHN 3

We love in  
deed and truth.

## MILLION DOLLAR LIFE MATCH

In January 2022, The Lutheran Church—Missouri Synod (LCMS) launched the **Million Dollar Life Match**, an exciting new matching grant opportunity to support LCMS congregations' local, beginning-of-life mercy efforts.

The program offers a total of \$1 million in matching grants — ranging from \$1,000 to \$50,000 each — to LCMS congregations. Grants will be given out in three phases during 2022 and 2023.

### Eligible projects might include:

- Partner with an LCMS Recognized Service Organization
- Start a congregational mercy project for mothers, babies and families
- Participate in the work of a local Christian pregnancy resource center
- Get involved with a Christian adoption or foster care organization
- Collaborate with nearby LCMS congregations to start a pro-life project



**How can your congregation start or expand its pro-life efforts?** Find more project ideas, information about LCMS Recognized Service Organizations and other Christian pro-life organizations, and step-by-step instructions for submitting your grant application at [lcms.org/life-grant](https://lcms.org/life-grant).

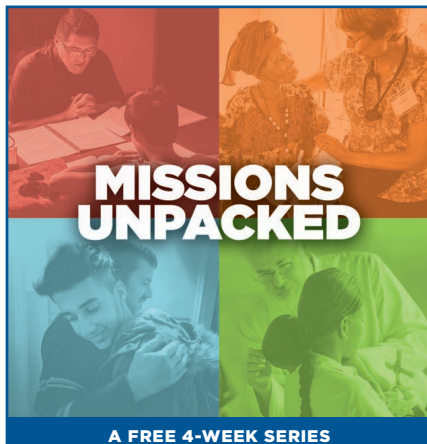


[lcms.org/life](https://lcms.org/life) | [LCMSLife](https://lcmsslife.org) | 888-THE LCMS

## Missions Unpacked

**January 24 – February 20, 2022: Embark on a global mission experience with LCMS missionaries without leaving home!**

Each week, from Jan. 24 to Feb. 20, you'll have opportunities to learn about LCMS mission work in an overseas region of the world, meet missionaries in a live Zoom presentation, and experience local culture through language, food and more! Registration is free and is open now. Multiple resources are available at <https://resources.lcms.org/general/spread-the-word-about-missions-unpacked/>



A FREE 4-WEEK SERIES

# INVESTMENT APPLICATION



## CHURCH EXTENSION FUND, INC. (CEF)

### Central Illinois District - LCMS (CID)

1850 North Grand Avenue West

Springfield, IL 62702-1626

TELEPHONE: (217) 793-1802 FAX: (217) 793-9454

EMAIL: [cef@cidlcms.org](mailto:cef@cidlcms.org) [www.cid-cef.org](http://www.cid-cef.org)

New Investment: \$ \_\_\_\_\_

Make check payable to:  
CID Church Extension Fund

-OR-

Existing CID-CEF Investment Certificate # \_\_\_\_\_

(signed Investment Certificate or Lost Certificate Agreement must be returned with Application)

Reinvest \$ \_\_\_\_\_ Redeem \$ \_\_\_\_\_

#### INVESTMENT CERTIFICATES - Minimum Investment: \$500 - Interest paid/applied and statement sent semi-annually

- ☐ 1.25% 5-year term ☐ 1.00% 3-year term  
☐ 0.60% 1-year term ☐ 0.30% 6-month term

##### Special Term and Rate – Limited Time!!!

- ☐ 1.00% 2-year term

#### INTEREST PAYMENT METHOD (Choose one)

- ☐ Accumulate interest and add to investment  
☐ Investment check semi-annually (if over \$25)  
☐ Direct Deposit – requires completed enrollment form  
(Go to [www.cidlcms.org](http://www.cidlcms.org) or contact CEF to request the form)

INTEREST RATES ARE EFFECTIVE 1/1/2021 AND ARE SUBJECT TO CHANGE – CALL TO CONFIRM CURRENT RATES

#### FLEXIBLE SAVINGS – Interest added to account monthly, statement sent quarterly

- ☐ Regular Flexible Savings Account Interest Rate: 0.25% Minimum: \$25 – available to all customers  
☐ Capital Campaign Flexible Savings Account Interest Rate: 0.60% Minimum: \$500 – available only to religious organizations

### Account Ownership (Complete A, B, or C. Please print)

#### A. Sole or Joint Owners (One or more owners as joint tenants with full rights of survivorship and not tenants in common. Beneficiaries may be designated on "Beneficiary Designation" form. Interest is reported to the IRS using the Social Security number of the first owner listed.)

1. \_\_\_\_\_  
Last or Religious Organization Name First MI Social Security # or TIN Date of Birth (MM/DD/YYYY)
2. \_\_\_\_\_  
Last First MI Social Security # Date of Birth (MM/DD/YYYY)
3. \_\_\_\_\_  
Last First MI Social Security # Date of Birth (MM/DD/YYYY)

- ☐ Check if "Beneficiary Designation" form is attached ☐ Check that all joint owners have signed application

#### B. Trust ("Certificate of Existence of Trust and Authority to Act" must be completed and sent with application)

Name of Trust

Social Security #/TIN

#### C. Custodian Investment for Minor (Under the Illinois Uniform Transfers to Minors Act)

MINOR Last First MI Social Security # Date of Birth (MM/DD/YYYY)

CUSTODIAN Last First MI Social Security # Date of Birth (MM/DD/YYYY)

CONTINUE TO BACK OF PAGE



## Contact Information for Account

---

Address

---

City

State

Zip

---

Home Phone

Cell Phone

Email Address

---

## Supporting Investments

*(Please provide the organization to be recognized for current or future investment requirements)*

---

Your Home Congregation

City

---OR---

---

Other LCMS Organization

City

---

## Investment Certification and Signature – Signatures of all account owners are required.

By signing this application ("I" refers to all applicants, whether one or more), I certify that:

- All information provided is true and correct.
- I am of legal age and not a minor.
- I authorize the Central Illinois District Church Extension Fund to initiate any correcting debit or credit that may be necessary.
- I have received a current Offering Circular of the Central Illinois District Church Extension Fund.
- I am a member of, contributor to, or participant in The Lutheran Church – Missouri Synod or any district or other program, activity, or organization which constitutes a part of the Synod or any of its districts, or I am an ancestor, descendant, or successor in interest to such person.
- I am a U.S. person (including a U.S. resident alien).
- The Social Security or Tax ID number shown for me on this application is correct.
- I am not subject to backup withholding because (a) I am exempt from backup withholding, or (b) the IRS has not notified me that I am subject to backup withholding as a result of a failure to report all interest or dividends, or (c) the IRS has notified me that I am no longer subject to backup withholding. Please draw an "X" through the preceding sentence if you ARE currently subject to backup withholding. Due to IRS regulations, the Central Illinois District Church Extension Fund cannot record your investment until your Taxpayer Identification Number is provided and the above certification signed. The IRS does not require your consent to any provisions of this application other than the certifications required to avoid backup withholding.

---

Signature of Account Owner/Trustee/Custodian/Authorized Signer

Date

---

Signature of Account Owner/Trustee/Custodian/Authorized Signer

Date

---

Signature of Account Owner/Trustee/Custodian/Authorized Signer

Date

The CID-CEF is a nonprofit religious organization, therefore CID-CEF investments are not FDIC-Insured bank deposit accounts.

**The Mission of the Central Illinois District Church Extension Fund, Inc. (CID-CEF) is to aid member congregations and agencies in the Central Illinois District of the LCMS in building and expanding their facilities and their ministry for the growth of God's Kingdom.**

**EXHIBIT A**  
**The Nominations Committee**  
**Central Illinois District Convention, LC-MS July 17—19, 2022**

To: Members of the Central Illinois District of The Lutheran Church – Missouri Synod  
Communicants, Congregations, Pastors, Teachers

**Nominations for Elective District Offices**

Greetings in the name of the Father and of the Son and of the Holy Spirit!

We invite you to submit names for possible candidates for the offices to be filled at the 2022 District Convention to be held in Springfield. We will nominate 2 people for each position.

Explanation of Terms:

- The term “**parish pastor**” refers to the called pastors, associate, and assistant pastors actively shepherding a congregation or congregations which hold voting membership in the District.
- The term “**ordained minister**” refers to persons who are on the Ministers of Religion-Ordained roster of the Synod which also includes emeritus and candidate pastors.
- The term “**parish teacher**” refers to persons who are on the Ministers of Religion-Commissioned roster of the Synod and who as teachers or directors of Christian education are actively serving a congregation or congregations which hold voting membership in the District. Excluded under this designation are emeritus and candidates.
- Some positions require a “**Commissioned Minister**” in which case a parish teacher/DCE as well as an emeritus or candidate teacher/DCE can be nominated.
- The term “**layman**” refers to voting lay members of congregations which hold voting membership in the synodical District.” Consequently, men or women can be nominated for district positions calling for a “layman” or “laymen” to serve.

The following positions are to be filled in 2022:

Central Illinois District, LC-MS

Officers

- (1) Secretary – ordained minister
- (1) Assistant Secretary – ordained minister
- (1) Treasurer – layman
- (1) Financial Secretary – layman

Board of Directors

- (4) parish pastors
- (2) parish teachers or DCEs
- (4) laymen

Nominations Committee for 2023 LCMS Convention

- (1) Layman

Congregational Constitutional Committee

- (2) ordained ministers at least one parish pastor
- (1) layman (an attorney)

Nominations Committee for the 2025 CID Convention

- (2) parish pastors
- (2) parish teachers or DCEs
- (2) laymen

CID Endowment Fund Board of Trustees

- (1) layman
- (4) others (laymen, minister – ordained or commissioned)

Any communicant member of a CID congregation (ordained, commissioned, or layman) is invited to send suggestions for candidates for these various offices. **Send your nominees on the forms provided in this mailing to: CID Nominations Committee, 1850 North Grand Avenue West, Springfield, IL 62702-1626. Nominations mailed must be postmarked to the CID office no later than December 31, 2021.**

2022 CID Nominations Committee

Rev. Peter Glock  
Mr. Daniel Yagow, teacher

Rev. Michael Koschmann  
Mr. Thomas Blessman

Mr. Shawn Hoffman, teacher  
Mr. Matthew Putnam

Rev. James Wright and Mrs. Martha Milas, ex-officio

**EXHIBIT B**  
**The Nominations Committee**  
**Central Illinois District, LC-MS Convention, July 17-19, 2022**

**Guidelines for Considering Nominees for Various Elected Positions**

In order to give some direction to individuals and congregations as they consider nominees for the various elected positions, the nominating committee is presenting the experience and qualifications for each position to be filled.

Explanation of Terms:

- The term “**parish pastor**” refers to the called pastors, associate, and assistant pastors actively shepherding a congregation or congregations which hold voting membership in the District.
- The term “**ordained minister**” refers to persons who are on the Ministers of Religion-Ordained roster of the Synod which also includes emeritus and candidate pastors.
- The term “**parish teacher**” refers to persons who are on the Ministers of Religion-Commissioned roster of the Synod and who as teachers or directors of Christian education are actively serving a congregation or congregations which hold voting membership in the District. Excluded under this designation are emeritus and candidates.
- Some positions require a “**Commissioned Minister**” in which case a parish teacher/DCE as well as an emeritus or candidate teacher/DCE can be nominated.
- The term “**layman**” refers to voting lay members of congregations which hold voting membership in the synodical District.” Consequently, men or women can be nominated for district positions calling for a “layman” or “laymen” to serve.

**Central Illinois District, LC-MS**

**Basic Qualifications for all Positions**

- decisions made based upon the Scriptures and Christian values
- good standing in his congregation and community
- a commitment of time needed to fulfill the responsibilities of the position

**Secretary & Assistant Secretary** (ordained minister)

- highly qualified in the use of computers and word processing

**Treasurer** (layman)

- a layman qualified in accounting and good business practices
- assist auditor in preparing depreciation schedules and restricted funds accounting
- assist in preparing annual CID budget
- should be willing and able to be in frequent communication with and/or frequently present at the District Office in Springfield

**Financial Secretary** (layman)

- a layman familiar with general business practices and record keeping

**Board of Directors** (parish pastors, parish teachers or DCE, laymen)

- experience in making decisions and giving leadership in his congregation and community

**Constitution Committee** (ordained at least one parish pastor, layman - attorney)

- a commitment of time

**Nominations Committee** (parish pastors, parish teachers or DCE, laymen)

- a commitment of time
- LCMS 2023 Nominations (layman) some idea of the governance of the Synod, able to attend meeting in St. Louis.

**Endowment Fund Board of Trustees**

- one layman with experience in fiscal management and investment portfolios
- one parish pastor
- three others (laymen, ordained or commissioned minister)



**EXHIBIT C**  
**The Nominations Committee**  
**Central Illinois District, LC-MS Convention, July 17—19, 2022**

## Nominations Form for Elected Positions

*(Not for President and Vice Presidents Nominations)*

I am suggesting the nomination of:

\_\_\_\_\_  
Name (please print)

\_\_\_\_\_  
Phone

---

Street or P.O. Box	City	Zip
--------------------	------	-----

---

E-mail address

For the position of: \_\_\_\_\_ Has this person agreed to be nominated? Y N

### Explanation of Terms:

- The term “**parish pastor**” refers to the called pastors, associate, and assistant pastors actively shepherding a congregation or congregations which hold voting membership in the District.
- The term “**ordained minister**” refers to persons who are on the Ministers of Religion-Ordained roster of the Synod which also includes emeritus and candidate pastors.
- The term “**parish teacher**” refers to persons who are on the Ministers of Religion-Commissioned roster of the Synod and who as teachers or directors of Christian education are actively serving a congregation or congregations which hold voting membership in the District. Excluded under this designation are emeritus and candidates.
- Some positions require a “**Commissioned Minister**” in which case a parish teacher/DCE as well as an emeritus or candidate teacher/DCE can be nominated.
- The term “**layman**” refers to voting lay members of congregations which hold voting membership in the synodical District.” Consequently, men or women can be nominated for district positions calling for a “layman” or “laymen” to serve.

Please give qualifications for nomination at the bottom of this form. (Example: positions/offices held in cong., dist., or synod; special skills; professional degree and/or career, i.e. attorney)

The nominee is a: ☐ parish pastor ☐ emeritus or candidate pastor  
☐ parish teacher ☐ emeritus or candidate teacher or DCE ☐ layman

Submitted by: \_\_\_\_\_ of \_\_\_\_\_  
(Name) (CID congregation and location)

**Mail to CID Nominations Committee, 1850 N. Grand Ave. West, Springfield, IL 62702-1626. Nominations must be postmarked or delivered to the CID office by December 31, 2021.**

---

---

---

---

---

---